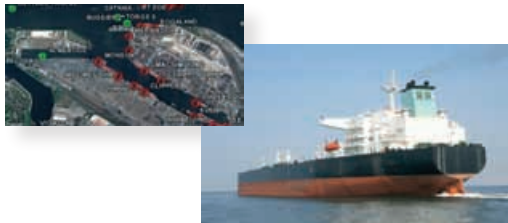




Your Benefits as Our Antenna Partner

- ✓ Real-time data on ship movements, course, speed and time of arrival
- ✓ Sailing schedules for container vessels
- ✓ In-depth data on each ships specifications
- ✓ Visualized on your computer which berths are occupied or free
- ✓ History of each port visited by yessels including mooring and departing time
- ✓ Email, text and telephone alerts of your desired vessels, which can be customized
- ✓ Specially designed version for mobile phone access including Android and iPhone

Notice the best: As our antenna partner you get all these services for free!



Our Service Is Available on

your computer via



your mobile phone via



your server via

API / XML Webservice

vesseltracker.com GmbH
 Mundsburger Damm 45
 22087 Hamburg
 Germany
 phone +49 40 - 97 07 86 10
 fax +49 40 - 97 07 86 19
 e-mail info@vesseltracker.com



vesseltracker.com
 real-time ship tracking with vesseltracker.com

BECOME OUR ANTENNA PARTNER



About Us

vesseltracker.com has been providing real-time vessel movements from all corners of the globe since 2006. Reporting on over 120,000 vessels a day, from 5 continents and in over 700 ports there is no other provider who can provide you a dedicated and customisable solution for all your ship reporting requirements. Some of our services:

- ▶ Antenna & Satellite Tracking Worldwide
- ▶ Vessel Master Data (Historic & Real-time)
- ▶ Alerting Systems via Email, SMS and Telephone
- ▶ Distance Table
- ▶ ETA Calculation
- ▶ Inmarsat Messages
- ▶ XML Webservice
- ▶ Mobile Access (iPhone, Android, HTML5, etc.)



Become Our Antenna Partner

Not in a region currently supported by our AIS network? Then become our antenna partner for your region and reap the multiple benefits.

Local Requirements

VHF antenna need to be placed outside on a high vantage point in the area of interest. The higher the antenna is placed, the better the coverage range will be.

A 24-hour/7 days a week local broadband/ADSL internet connection & power socket.

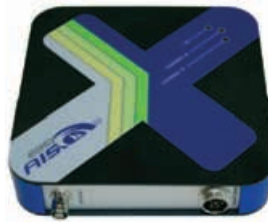


Our Installation Kit

1. Antenna and cable



2. AIS receiver



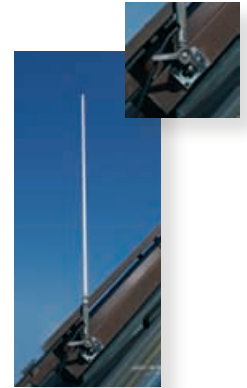
3. Converter



The Set Up - Quite Simply!

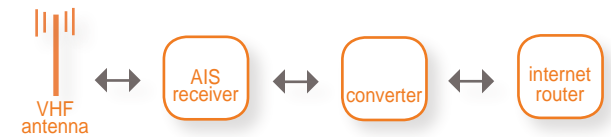
Step 1

Install the VHF antenna in suitably high location like offices roof, within a close proximity to port or ocean.



Step 2

Connect cabling from the antenna to receiver. Then connect the receiver to the converter which has access to your internet supply.



Step 3

Plug in the power and grant your internet supply.



That's It!

Join free setup and installation support via telephone.

Benefit from real time tracking on all the local vessels from your antenna system, and through our global network.

If you are interested, please contact our sales team:

sales@vesseltracker.com